



AUCTION

LEADING THE INDUSTRY SINCE 1945

Realtors • Auctioneers • Advisors

TUESDAY – OCTOBER 24, 2023 – 6:00 PM

Nice Ranch Home W/ Dbl. Garage

NEAR SIPPO LAKE IN SHOREVIEW ALLOTMENT
PERRY TWP. - PERRY LOCAL SCHOOLS

Live Auction With Online Bidding Available

All sells to settle the estate on location:

5160 SHOREVIEW CIRCLE NW, CANTON, OH 44708

Directions: From West Tuscarawas St. go north on Perry Dr., west to Shore Line Ave. onto Albany Dr. and left onto Shoreview Circle to property or from 12th St. go south on Perry Dr., west onto Tyner St., south onto Albany Dr. and west onto Shoreview Circle to property.

Watch for KIKO signs.



Information is believed to be accurate but not guaranteed. KIKO Auctioneers

800-533-5456 | kikoauctions.com



Real Estate: Nice brick and vinyl sided ranch home with 1,876 SF features foyer entry with tile floor and coat closet. Large living room with cathedral ceiling that opens to sunroom with lots of windows overlooking backyard and has door to rear deck. Oak kitchen with electric range, dishwasher, microwave and garbage disposal, dining room, first floor laundry room with washer and electric dryer and pantry. Master bedroom suite with master bath with shower, walk-in closet and sliding door to the rear deck. Second bedroom with double closet, third bedroom/office with closet and a full bath completes the main level. Full basement with 12-course block, York F/A gas furnace, central air, 40-gal. hot water tank, 200-amp. electric breakers, and half bath. Attached double garage with door opener and concrete driveway. Lot size 93' x 155 and half year taxes are \$1,717.05. This property is located on a quiet cul-de-sac near Sippo Lake in Shoreview Allotment. Perry Township and Perry Local Schools. Ready for you to make your own personal touches to make this house a home. Immediate possession at closing!



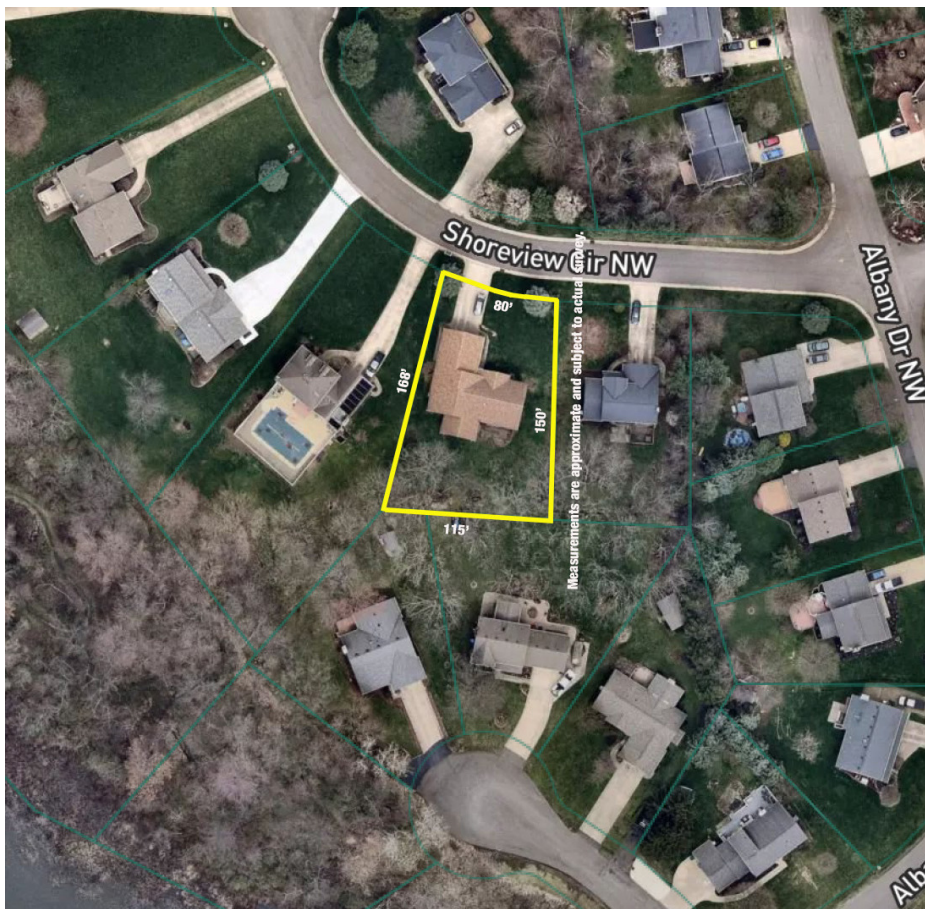
Home will be open for inspection on Monday, October 16th from 5-6pm. Contact Tina or Gene for more information or help with financing. Visit www.kikoauctions.com for additional pictures and online bidding information.



Terms On Real Estate: 10% down auction day, balance due at closing. A 10% buyer's premium will be added to the highest bid to establish the purchase price. Any desired inspections must be made prior to bidding. All information contained herein was derived from sources believed to be correct. Information is believed to be accurate but not guaranteed.



Auction By Order Of: Ronald DiFrancesco, Executor for the Estate of Richard DiFrancesco, Stark Co. Probate case #246892



Auctioneer
EUGENE F. KIKO
 330-495-0041
genekiko@kikocompany.com



Realtor®
TINA SLATZER
 330-280-2900
tslatzer@kikocompany.com

800-533-5456 | kikoauctions.com

